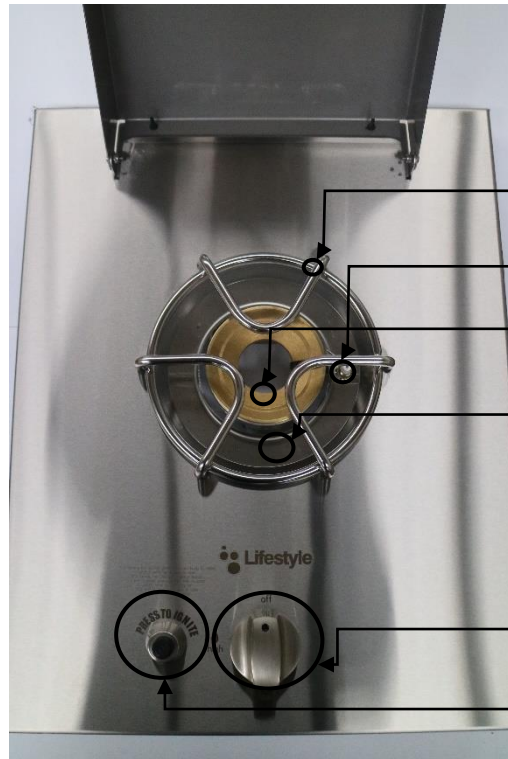


Contents

UNDERSTANDING YOUR SIDE BURNER/WOK BURNER	2
A. SIDE BURNER SCHEMATICS.....	2
B. PARTS DESCRIPTION	3
REPLACING YOUR S/B KNOB	5
REPLACING YOUR IGNITION BOX.....	6
REPLACING YOUR BURNER	7
REPLACING YOUR GAS VALVE.....	8
REPLACING YOUR S/B GAS PROBE.....	9
REPLACING YOUR S/B TRIVET	10

UNDERSTANDING YOUR SIDE BURNER/WOK BURNER

A. SIDE BURNER SCHEMATICS



<i>Burner Clips</i>
<i>SS Trivets</i>
<i>S/B Ignition Probe</i>
<i>Burner</i>
<i>S/B Dish</i>
<i>Grounding Wire</i>
<i>S/B Ignition Box</i>
<i>S/B Knobs</i>
<i>S/B Ignition Bezel</i>
<i>S/B Gas Valve</i>



B. PARTS DESCRIPTION

Code	Name	Description
	S/B Burner	Cast Iron Gas Burner
IPB SB	S/B Ignition Box	Ignition Probe and Collector Box for Side Burner
	S/B Ignition Probe	Ignition probe for Side Burner
GVS	S/B Gas Valve	Side Burner Gas Valve and Tee
	S/B Trivets	Stainless Trivet for Side Burner
	S/B Dish	Side Burner Dish with Bracket for Burner
CKS	S/B Knobs	Gas Control Knob
	S/B Wire Set	Ignition Wire Set for Side Burner

Name

PRODUCT CODE



S/B Burner



Side Burner Ignition Kit

IKP 2B



S/B Ignition Probe

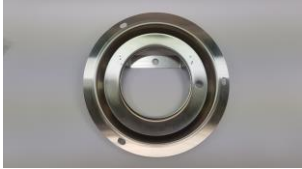


S/B Gas Valve

GVS



S/B SS Trivets



S/B SS Dish



S/B Knobs

CKS



S/B Ignition Wire Set

REPLACING YOUR S/B KNOB

Parts Required	S/B Knob
Tools Required	
Precautions	Turn the gas source off.

STEPS

- Make sure the knob is turned to “OFF” position. (as in Figure 1)
- Pull the knob out.
- Place the new knob with dot facing up.
- Push the Knob down through the gas valve stem.



Figure 1: Side-burner Knob Placement

REPLACING YOUR IGNITION BOX

Parts Required	Ignition Box
Tools Required	
Precautions	Pressing the ignition generates electric spark.

STEPS

- Unplug the ignition wire from the ignition box underneath the side burner (as shown in Figure 2 (R))
- Unscrew the ignition bezel. (as in Figure 3)
- Unscrew the Hexagonal Plastic washer.
- Place the new ignition box with the threads through the side burner.
- Screw the hexagonal plastic washer.
- Screw the ignition bezel.
- Plug the ignition wire.



Figure 2: Side-burner Ignition Box Parts (L) and Underside of Ignition Box (R)



Figure 3: Removing Side-burner Bezel

REPLACING YOUR BURNER

Parts Required	S/B Burner, Locking Pin
Tools Required	Philips Head (PH) Screw Driver
Precautions	Make sure the gas source is turned off

STEPS:

- Pull the S/B knob out.
- Unscrew the two screws halfway. (as shown in Figure 4)
- Pull the Locking pin out from the S/B Dish Bracket. (as shown in Figure 4)
- Gently, pull out the S/B burner out of the S/B Dish bracket and the gas valve
- Place the new burner in between the gas valve and the S/B Dish brackets.
- Place the locking pin through the burner.
- Tighten the gas valve screw.
- Place the knob, with the dot facing up.



Figure 4: Side-burner Gas Valve without knob (L) and Burner Clip (R)

REPLACING YOUR GAS VALVE

Parts Required	Gas Valve
Tools Required	Philips Head (PH) Screw Driver, Adjustable Wrench or (5/8" Wrench for LPG Hose and S/B Burner Hose and 3/4" Wrench for Natural Gas Hose), Loxal Thread Sealant
Precautions	Make sure the gas source is turned off. Make sure you have the right gas valve, LPG or Natural Gas converted, as shown in Figure 5, please note that Natural gas valve has wider gas outlet than LPG valve)

STEPS:

- Unscrew the gas hose fitted into the gas valve. Make sure to use the right size wrench.
- Pull the knob out of the side burner.
- Unscrew two screws holding gas valve into the side burner. . (as shown in Figure 4)
- Be careful of the burner while removing gas valve as it holds the burner.
- Unscrew the two screws from the new gas valve.
- Place the gas valve with the valve stem poking through the side burner.
- Screw the two screws holding the gas valve.
- Make sure the gas valve is correctly placed within the burner.
- Before fitting the gas hose, apply some Loxeal over the thread of the gas valve. Do not apply excess Loxeal, as it may constraint the gas flow through the valve.
- Tighten the gas hose to the gas valve.
- Place the gas knob with dot facing up.



Figure 5: LPG Gas Valve in Left and NG Gas Valve in Right



Figure 6: Removing Burner from Gas Valve

REPLACING YOUR S/B GAS PROBE

Parts Required	S/B Gas Probes
Tools Required	Adjustable Wrench or 9/16" Wrench
Precautions	Pressing the ignition generates electric spark. And, make sure the gas source is turned off.

STEPS:

- Pull the ignition wire from the gas probe, from underneath of the side burner.
- Grip the hexagonal brass nut underneath the side burner with a Wrench (9/16") and unscrew the hexagonal nut from the top. (as shown in Figure 7)
- Place the new gas probe using same steps.
- Make sure the electrode is around 5mm away from the burner and not in contact with the burner.
- Plug the ignition wire in the probe.



Figure 7: Hexagonal Nut in Gas Probe

REPLACING YOUR S/B TRIVET

Parts Required	S/B Gas Trivet
Tools Required	Philips Head (PH) Screw Driver
Precautions	Pressing the ignition generates electric spark. And, make sure the gas source is turned off.

STEPS:

- Unscrew three screws from underneath the side-burner, that's holding the trivet.
- Be careful of the earthing probe.
- Be careful of the side-burner dish; the screw holds the dish with the trivet.
- Place the new trivet on the top of the side-burner and make sure the screw holes are aligned.
- Screw the trivet from underneath of the side-burner.
- Make sure the earthing probe is connected to one of the nearest screw.

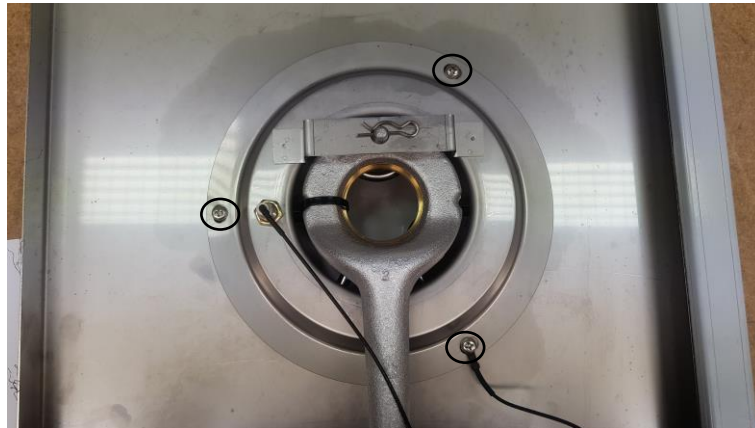


Figure 8: Underside of the Side-burner showing trivets screws